



Fast Food Teknik a/s

Operating instructions and service manual

TL-series Combi Toaster



Version 1.0 – APR 2016

Table of content

Table of content	2
1. Introduction	3
2. In general	3
2.1. Manufacturer	3
2.2. Full name of the machine	3
2.3. Machine tag	3
3. Overview and application	4
3.1. General description	4
3.2. Purpose and intended use	4
3.3. Warning of foreseen misuse	4
3.4. Technical specifications and consumption	4
4. Safety on use	5
4.1. Safety precautions to be taken by the user	5
5. Operation	5
6. Installation	5
6.1. Placement	5
6.2. Connection	5
7. Maintenance and repair	6
7.1. Cleaning	6
7.2. Repair	6
7.3. Accessories	6
7.3.1. Spare parts	7
8. End of use	11
8.1. Destruction	11
9. Appendix	11
9.1. Signs, symbols and pictograms	11
9.2. EU Declaration of Conformity	12
9.3. Wiring diagram	13

1. Introduction

Original instruction manual

This manual is a translation of the original manual for the Combi Toaster TLseries. In the following mentioned as *the toaster*.

Purpose

The purpose of this manual is to ensure proper installation, use, handling and maintenance of the toaster.

Accessibility

The manual shall be kept in a – to the staff – well known place which is easy to access for electricians and other personnel who maintain.

Knowledge

The employer is obligated to ensure that people who operate, serve and/or maintain the toaster, has read this instruction manual or as a minimum are familiar with parts which are relevant to their job.

Furthermore everybody who operates, serve and/maintain the toaster is obligated to seek information in this operation instructions manual.

2. In general

2.1. Manufacturer

Combi toaster TL-series is manufactured by

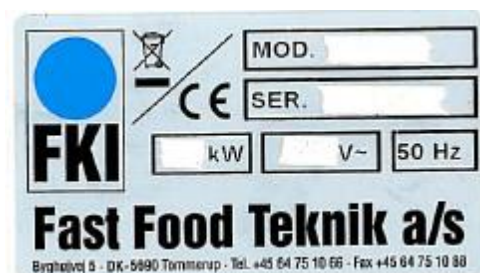
Company name: FKI Fast Food Teknik A/S
Address: Byghøjvej 5, Verninge
DK-5690 Tommerup

2.2. Full name of the machine

The full name of the toaster is **Combi Toaster TL xxxx**

2.3. Machine tag

The machine tag is placed on the back.



3. Overview and application

3.1. General description

The FKI Combi Toaster (clamshell toaster) are designed for heating up all kinds of bread, sandwiches and similar by direct contact to the pans. The toaster has an upper and a lower grooved and Teflon coated pan, which when properly used, makes the product crispy and with a grilled appearance.

3.2. Purpose and intended use

The Toaster is intended for warming up sausage bread, hotdog bread, burger buns, bagels, sandwiches, French toast, Paninis and similar kinds of readymade non-frozen products.

3.3. Warning of foreseen misuse

The toaster should not be used for frying purposes since fat etc. can penetrate into the electrical components.

3.4. Technical specifications and consumption

Overall dimensions

Model	Outer dimensions W x D x H [mm]	Weight [kg]	Distance between pans
TL 5270	280 x 375 x 170	10	0-75 mm
TL 5211	280 x 330 x 170	10	35 mm
TL 5212	280 x 330 x 170	10	27 mm
TL 5602	420 x 260 x 190	7	15 / 25 mm
TL 5603	420 x 260 x 190	7	20 mm
TM 05	180 x 450 x 205	10	27 mm

Elektricity

Connection power: 230 V AC

Frequenzy: 50/60 Hz

Model	Power	Current consumption
TL 5270/5211/5212	2,0 kW	8,7 A
TL 5602/5603/TM 05	1,6 kW	7,0 A

Warning! Only connect to a power outlet with earth connection.

4. Safety on use

4.1. Safety precautions to be taken by the user

It is recommended to use gloves when operating the toaster since pans as well as the outer surfaces can be very hot.

5. Operation

Before the toaster is used for the first time allow the toaster to warm up to 200°C and let it be at this temperature for at least 5 minutes.

The toaster is heating up by turning the thermostat knob to desired temperature. As long the heating up is ongoing, the yellow glow lamp will light up.

During heating up let the upper shell be closed. The toaster is ready for use when the glow lamp switches off.

Open the toaster by the handle on the upper shell and be careful not to touch other parts of the toaster since they are very hot.

Place the product on the lower pan and close the upper shell until there is contact to the product.

Tilberedningstiden er afhængig af produktet, men det er klar når produktet har opnået den ønskede opvarmning og sprødhed. Brug evt. et stopur med alarm.

The cooking time depends on the product, but it will be ready when the desired temperature and crispiness are reached. A stopwatch or alarm clock can be used.



6. Installation

6.1. Placement

The toaster is placed on a desktop and not close to other equipment or things that cannot stand the radiant heat coming from the toaster.

6.2. Connection

The toaster shall be connected to a 230V power outlet with earth connecting suited for the plug type on the power cord. If plug and outlet is not of same type, the plug shall be replaced.

Never connect the toaster to a fixed installation without safety break out switch.

7. Maintenance and repair

7.1. Cleaning

Always let the toaster cool off and remove the plug from the power outlet before cleaning or repair is done.

The pans are cleaned using a soft brush or the Teflon scraper suited for the grooves of the pans (optional equipment). Never use metal tools since this can damage the Teflon coating.

The outer surfaces is cleaned by use of a damp cloth with a mild cleaning detergent. Remember to wipe off with clean water.



7.2. Repair

Authorized personnel with knowledge of electrical equipment shall always carry out repair.

7.3. Accessories

Heating shield

The polycarbonate heating shield protect the user from being burned. The shield is removable for easy cleaning. The heating shield are optional for the FKI toasters and are available for all models.



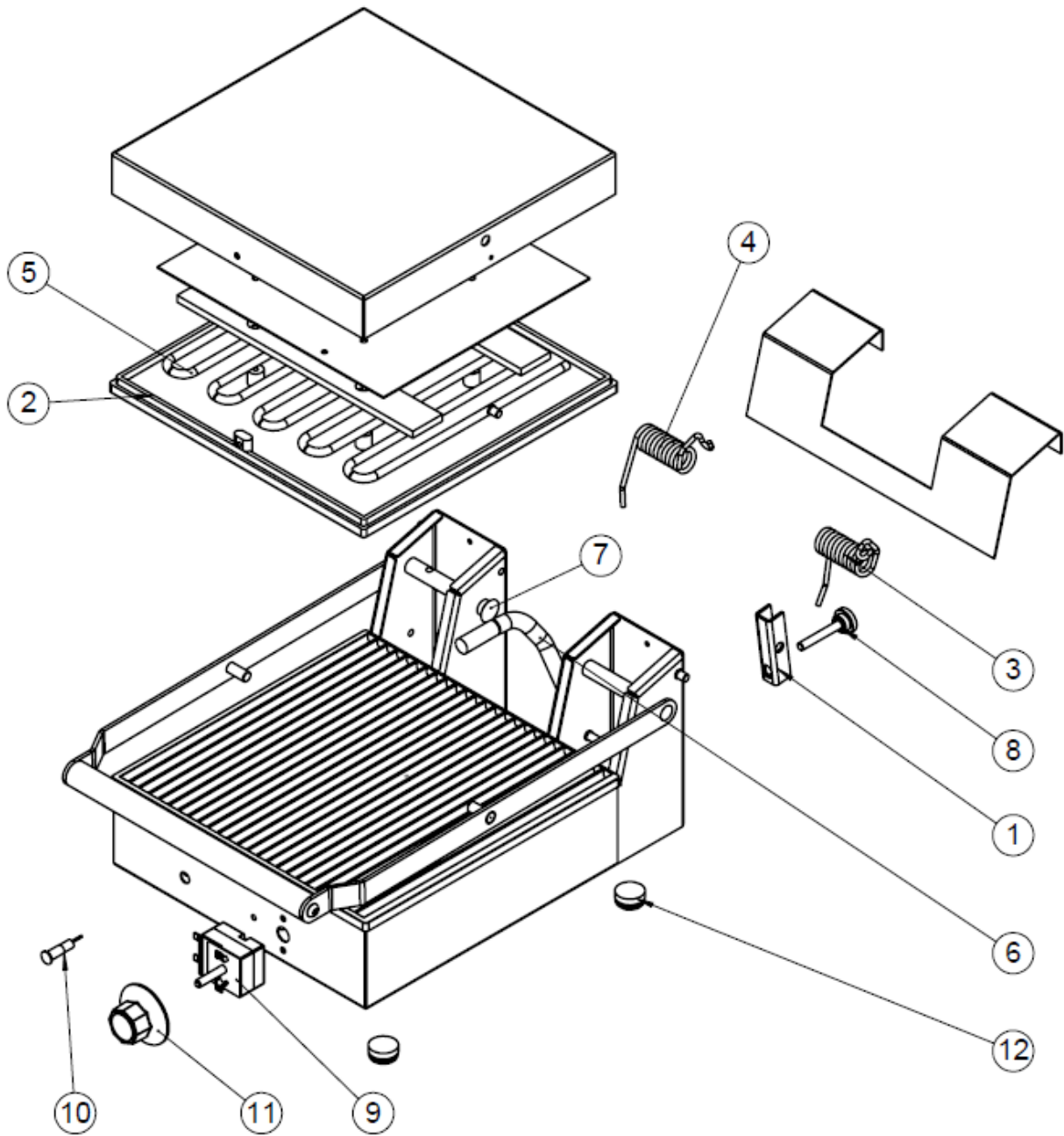
Teflon scraper

The heat surfaces on the FKI toasters are Teflon coated. The scraper is designed to fit the grooves and the material protect the coating.

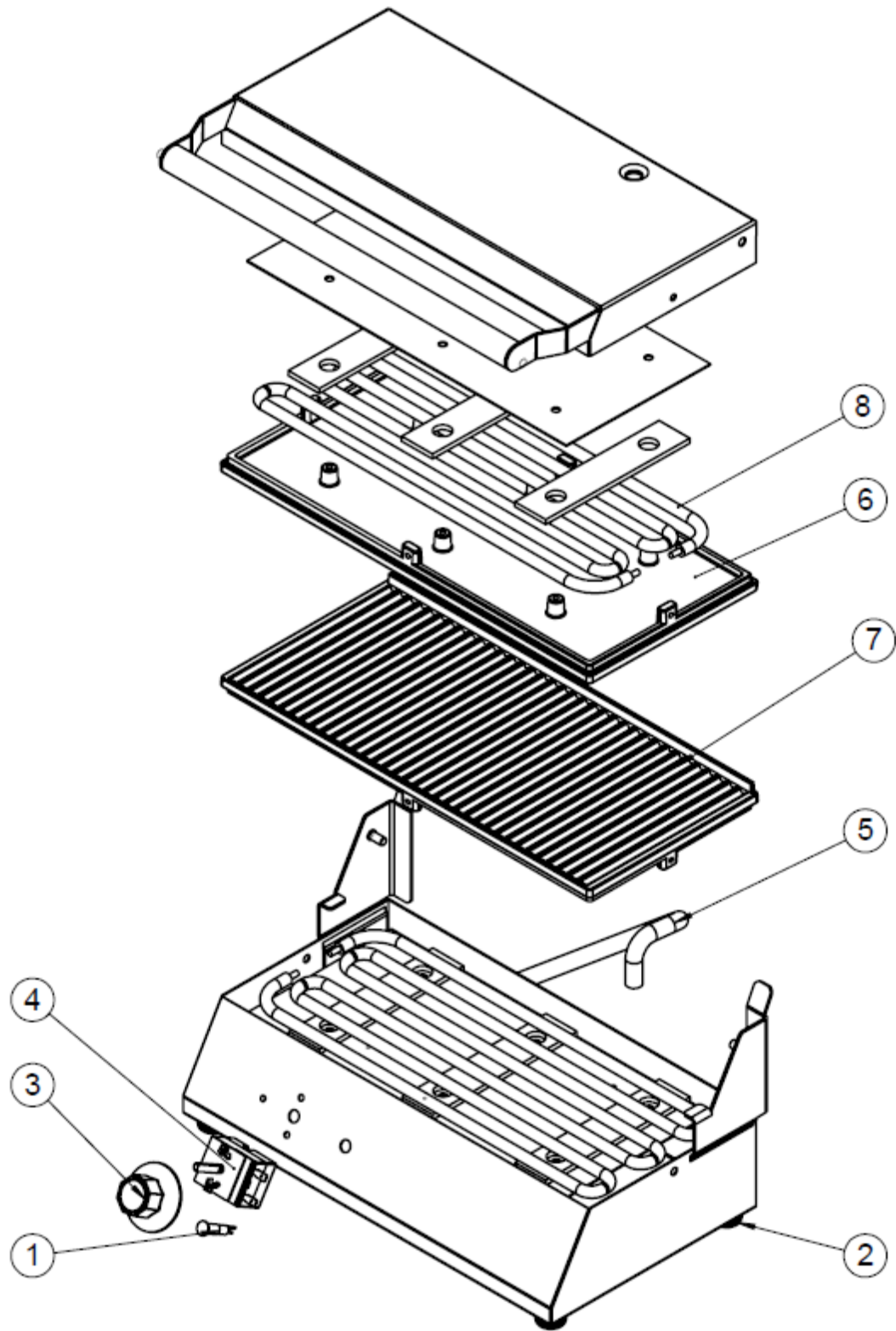


7.3.1. Spare parts

TL 5270 and 5211/12



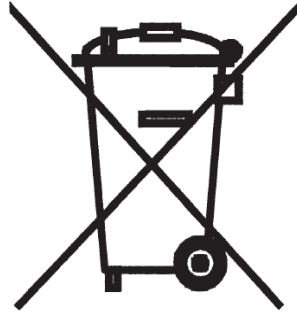
Pos.	Part no.	Pcs.	Description
1	83-01008	1	Bracket
2	83-08195	2	Pan Teflon coated
3	83-01007	1	Spring left
4	83-01006	1	Spring right
5	83-08208	2	Heat element 1.0 kW 230V
6	83-08194	1	Spring for wiring
7	78-07749	2	Starlock with cap Ø12
8	78-00002	1	Adjustment screw for spring
9	83-08206	1	Thermostat 50-250°C 1-pole
10	83-07507	1	Glow lamp yellow
11	83-08202	1	Knob 50-250°C
12	81-06027	4	Leg, black Ø22



Pos.	Part no.	Pcs.	Description
1	83-07507	1	Glow lamp yellow
2	81-06027	4	Leg, black Ø22
3	83-08202	1	Knob 50-250°C
4	83-08206	1	Thermostat 50-250°C 1-pole
5	83-08194	1	Spring for wiring
6	83-07794	1	Pan without egde Teflon coated
7	83-07794	1	Pan with edge Teflon coated (not for TM 05)
8	83-07796	1	Heat element 0,8 kW 230V

8. End of use

8.1. Destruction



The toaster is marked with the above recycling symbol (EC Directive 2002/96/EC) and must be disposed in accordance with your country order. This means that when the product becomes obsolete, you should dispose it after the local municipality's rules, e.g. in unsorted waste stream.

9. Appendix

9.1. Signs, symbols and pictograms

The toaster is marked with the following symbol and pictograms:



Recycling Symbol according to EU Directive



Hot surface – use protection gloves

9.2. EU Declaration of Conformity

EF-overensstemmelseserklæring

2006/42/EF bilag II A

Fabrikant:

Navn FKI Fast Food Teknik A/S
Adresse Byghøjvej 5, Verninge
Postnr. og by 5690 Tommerup

Erklærer hermed at maskine type:

- Toaster type TL 5202
- Toaster type TL 5203
- Toaster type TL 5211
- Toaster type TL 5212
- Toaster type TL 5270
- Toaster type TM 05

Er fremstillet i overensstemmelse med følgende EF direktiver:

- 2006/42/EF Maskindirektivet

under anvendelse af følgende harmoniserede standarder:

- EN 60204-1 Elektrisk Materiel på Maskiner

Søren Poulsen
Underskriver

Direktør
Stilling

Verninge
Sted

05.01.2011
Dato

Pos.	Part no.	Pcs.	Description
1	72-03627	1	Power cord 3 x 1,5 mm ²
2	72-03509	1	Connection block 3-polet
3	83-08206	1	Thermostat 50-250°C
4	83-07507	1	Glow lamp yellow
5		2	Heat element (see spare parts list)



FKI Fast Food Teknik a/s

Byghøjvej 5, Verringe – DK-5690 Tommerup – Danmark
Tlf. +45 6475 1066 – info@fki.dk – www.fki.dk